



**CEMENT CONCRETE
& AGGREGATES AUSTRALIA**

SUPPORTING QUEENSLAND IN UNCERTAIN TIMES

2020 State Election Agenda



ABOUT OUR INDUSTRY – JOBS AND ECONOMIC DEVELOPMENT

The cement, concrete and aggregates industry has a long and proud association with Queensland having supported the State for almost 200 years. Employing more than 6,000 people directly, and 18,000 indirectly, our industry is based in all parts of the State, proudly producing approximately 45 million tonnes of sand, stone and gravel (ie aggregates); 7.2 million cubic metres of pre-mixed concrete; and 2.2 million tonnes of cementitious material (eg cement, flyash) each year.

We are a crucial part of the local construction supply chain, providing safe, secure, reliable and sustainable materials for construction, and other crucial industries.

AN ESSENTIAL INDUSTRY

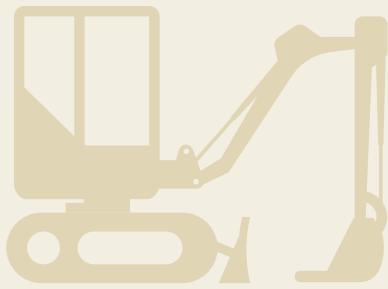
- Each Queenslanders needs at least 10 tonnes per annum of quarry material to support the building of roads, houses and other infrastructure.
- Building just 1km of two lane highway requires some 14,000 tonnes (or 400 truckloads) of construction aggregates.
- High-rise buildings use up to 1,000 tonnes of aggregate per floor.
- An average new home needs about 110 tonnes of crushed rock, sand and cement in 53m³ of concrete.

A RELIABLE, SAFE AND SUSTAINABLE INDUSTRY

- Concrete is flood resilient, fire and termite resistant, robust and strong. It has high thermal mass, helping to reduce building energy consumption, and can be recycled into road-base materials or aggregates.
- There are significant opportunities for waste-to-energy programs in the cement sector.
- Our industry is committed to the health and safety of its workers, operating in an environmentally responsible manner and working collaboratively with community and Government.

A LOCAL MANUFACTURER

- We are an industry that operates in all State electorates, on all construction sites.
- In general, quarries only provide materials to their local communities, and the material needs to be sourced from highly specific geological areas.
- Queensland's economy benefits from a complete local cement, quarry and concrete supply chain not dependent on government subsidies.

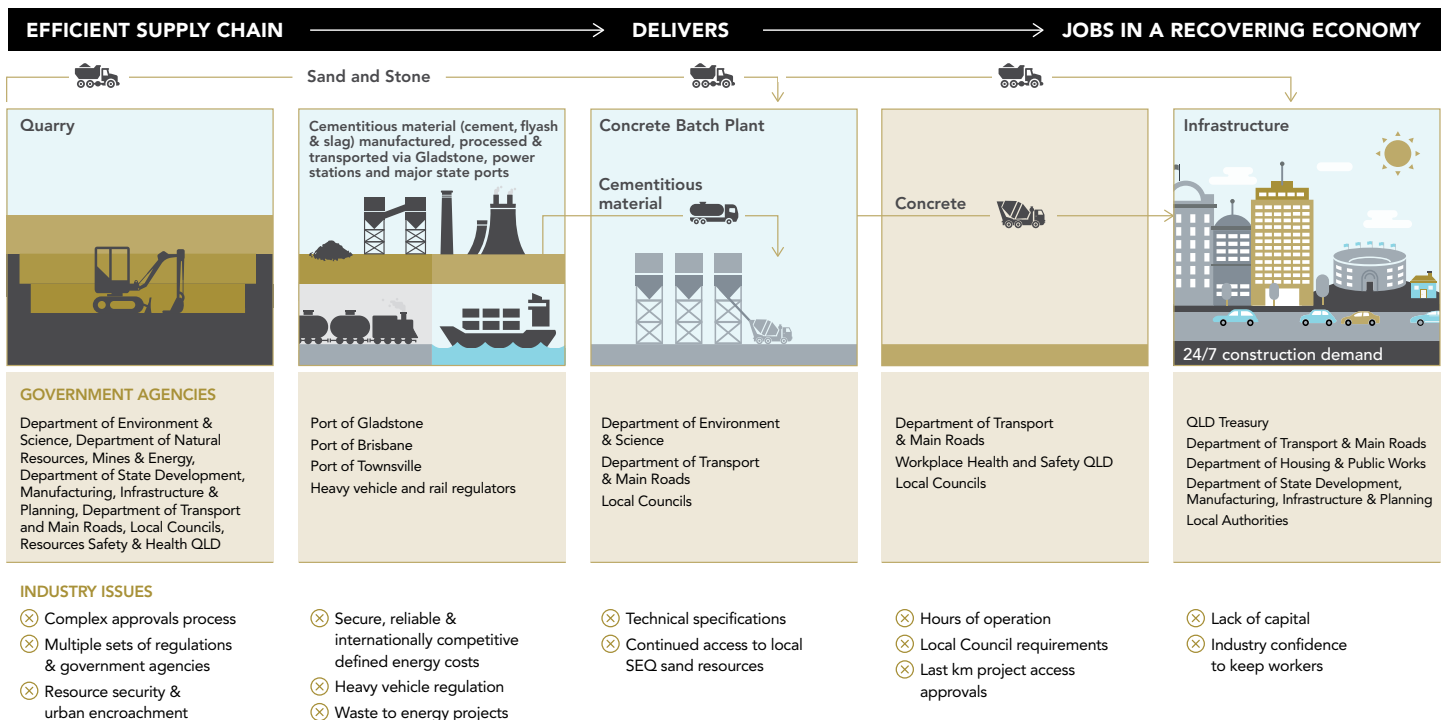


QUARRY PROTECTION & APPROVALS = AFFORDABLE CONSTRUCTION

CCAA estimates if State and Local Governments don't plan properly, and quarries need to be located further afield, an extra 100km will result in:

- Housing cost increases and blow-outs in project infrastructure costs – in the order of an extra \$250 million for a \$2 billion project.
- More truck movements and impacts on the road network – a fivefold difference in truck travel per annum.
- Increased Greenhouse emissions in the order of 40,000 tonnes per year.

ABOUT OUR SUPPLY CHAIN



CCAA 2020 ELECTION AGENDA

SUPPORTING OUR STATE DURING UNCERTAIN TIMES

Our sector has been fortunate to be able to keep operating during the COVID-19 pandemic, and has shown its ability to continue providing essential construction materials.

Our sector employs truck drivers, machinery operators, laboratory and technical specialists, environment and safety professionals, plant and site managers, sales and clerical officers. More than 230,000 are employed in the broader construction industry.

COVID-19 has also highlighted the importance for the State and the nation to retain local manufacturing and industry capability. As a local manufacturing industry providing a necessary product for the community, it is vital that policy frameworks ensure continued investment in the sector so that it can continue this role into the future.

In the current challenging times, and in the midst of continued uncertainty for many parts of the broader economy, we believe that a clear economic development agenda is needed for Queensland – in state development, infrastructure and housing.

We need to instil long term confidence and support those industries that can function effectively and continue to employ Queenslanders, and set us up to prosper in the future.

1. MEASURED AND CONSIDERED COVID19 HEALTH MEASURES

- Ongoing industry-government dialogue and collaboration.
- Continued freight and supply chain access across State borders.
- Continued efforts to allow industries to operate in a COVID-19 safe manner and to allow the economy to re-open as quickly and safely as possible.

2. A SMART INFRASTRUCTURE AGENDA

- An ambitious infrastructure program in transport, water and power generation to allow key drivers of our economy – such as mining, energy and agriculture exports to flourish.
- Expediated management and release of QTRIP and other State Government infrastructure projects.
- Procurement models that encourage a broad range of participants in delivering infrastructure projects.

3. FOCUS ON RESOURCE AND PRIVATE SECTOR INVESTMENT

- QLD Government to expedite approvals of mining and resource projects to create jobs and support local supply chains.
- Support lower energy cost measures for manufacturers to foster investment and ensure local industry capability.
- Incentives and infrastructure to encourage companies to base large operations in Queensland.

4. JOB-ENABLING POLICY AND REGULATION

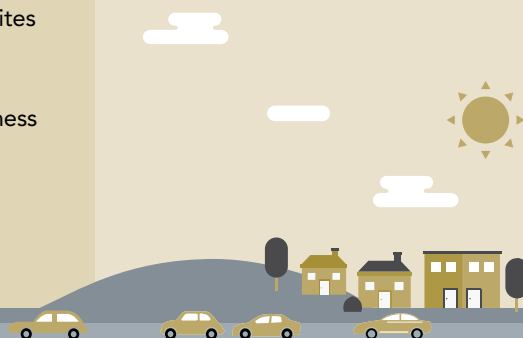
- Resolve regulatory “Stop Signs” put up by non-representative local interests (particularly for quarry approvals) so that the State as a whole can progress.
- Relaxation in constraints for hours of operation for construction sites and supplying operations.
- Minimise payroll tax, land and property taxes and other business costs as much as possible to encourage investment.

5. SUPPORTING HOME-BUILDING

- Increased housing investment, including in social and affordable housing, to address shortages and support construction jobs.

6. LONG TERM RESOURCE ACCESS AND PROTECTION

- State Government to ensure local councils stop incompatible development near quarry reserves in planning schemes and facilitate the development of new sites.
- Ensure continued long term access to sand from Moreton Bay for SEQ construction needs.
- Cross-government construction materials strategy to ensure cohesive policy approach, and appoint Minister with specific oversight for the strategy.



ABOUT CCAA

CCAA is the peak body for the heavy construction materials industry in Australia.

Our members operate cement manufacturing and distribution facilities, concrete batching plants, hard rock quarries and sand and gravel extraction operations throughout the nation.

CCAA membership is made up of the majority of material producers and suppliers, and ranges from large global companies, to SMEs and family operated businesses. It generates approximately \$15 billion in annual revenues and employs approximately 30,000 Australians directly and a further 80,000 indirectly.

We represent our members' interests through advocacy to government and the wider community; assistance to building and construction industry professionals; development of market applications; and a source of technical and reference information.



CCAA MEMBERSHIP

FOUNDATION MEMBERS



Adelaide Brighton Ltd



Boral Australia



Cement Australia Pty Ltd



Hanson Australia Pty Ltd



Holcim (Australia) Pty Ltd

ORDINARY MEMBERS

Allsands Pty Limited
Alsafe Pre-Mix Concrete Pty Ltd
Barossa Quarries Pty Ltd
Barro Group
Baxters Concrete Pty Ltd
Bedrock Quarry Products
Benedict Industries Pty Ltd
Bis Quarries Pty Ltd
Braeside Quarries Pty Ltd
Brisbane City Council T/as
Bracalba Quarries
Broadway & Frame Premix
Burdekin Concrete Pty Ltd
Byrne Bros Pty Ltd
CCS Materials Pty Ltd
Clare Quarry Pty Ltd
Clay & Mineral Sales Pty Ltd
Cleary Bros (Bombo) Pty Ltd
Concrete 4 Goulburn
Concrete Pty Ltd
Davalan Concrete Pty Ltd
Delatite Pre-Mix Pty Ltd

T/as Mansfield Pre Mix
D K Quarries Pty Ltd
Duggans Pty Limited
Elvin Group Pty Ltd
Entire Concrete Pty Ltd
Eziway Concrete (T & M Lynch)
Flyash Australia Pty Ltd
Forbes Concrete Pty Ltd
Fulton Hogan Industries
Gaspersic Contracting Pty Ltd
Gunlake Concrete NSW Pty Ltd
Hazell Bros Group Pty Ltd
Hillview Quarries Pty Ltd
Hunter Valley Concrete Pty Ltd
Hymix Australia Pty Ltd
Independent Cement Lime
Pty Ltd
Kennedy Haulage Pty Ltd
Lime Industries Pty Ltd
Mackay Sand and Gravel Sales
Mantina Quarries
Mentone Pre Mix

Metromix Concrete Pty Ltd
Metro Quarry Group Pty Ltd
Minicrete Concrete
Mini-crete Pty Ltd Seven Hills
MSD Construction Pty Ltd
MSP Group Pty Ltd
Neilsen's Quality Gravels Pty Ltd
Newcastle Sand Pty Ltd
Nucrush Pty Ltd
Parkes Ready Mixed Concrete
Pilatti Bros Transport
P.F. Formation Sand & Concrete
Pioneer North Queensland
Pty Ltd
Premier Resources
T/as Hy-Tec Industries Pty Ltd
Qcrete Premix Pty Ltd
Quarrico Products Pty Ltd
Ransberg Pty Ltd T/as
WA Premix and WA Bluemetal
Riverside Industrial Sands Pty Ltd
RNB Trading Pty Ltd

Santos Ready Mixed Conc Pty Ltd
SA Premium Cement & Concrete
SLN Australia Pty Ltd
Sloans Sands Pty Ltd
Southern Pacific Sands
Southern Quarries Pty Ltd
Stoney Pinch Pty Ltd
T/as Stoney Pinch Quarry
Sunstate Cement Limited
Supermix Concrete & Quarries
Tegra Australia Pty Ltd
The Concrete Yard Pty Ltd
T/as Queanbeyan Pre-Mix
Concrete
Titan Premix Concrete
Treloar Transport
Urban Resources Pty Ltd
Wagners Holding Company Ltd
Wallaroo Contracting Pty Ltd
Western Suburbs Concrete
Zanows Sand and Gravel

ASSOCIATE MEMBERS

BHS-Sonthofen (Aust) Pty Ltd
Command Alkon Incorporated
Concrete Colour Systems

Fieldwicks Crushing & Screening
GCP Applied Technologies
Quarry & Mining Manufacture

Sika Australia Pty Ltd
Third Zeton Pty Ltd
(Tiemann Tankers)

WAM Australia
Westrac
Xypex Australia